

CADANGAN KERJA-KERJA TEBATAN BANJIR
DAN
MENAIKTARAF SISTEM SALIRAN BANDAR S10,
DAERAH TIMUR LAUT, PULAU PINANG.



PRESENTATION TITLE:

TEMPORARY LANES CLOSURE AT
LEBUH LINTANG

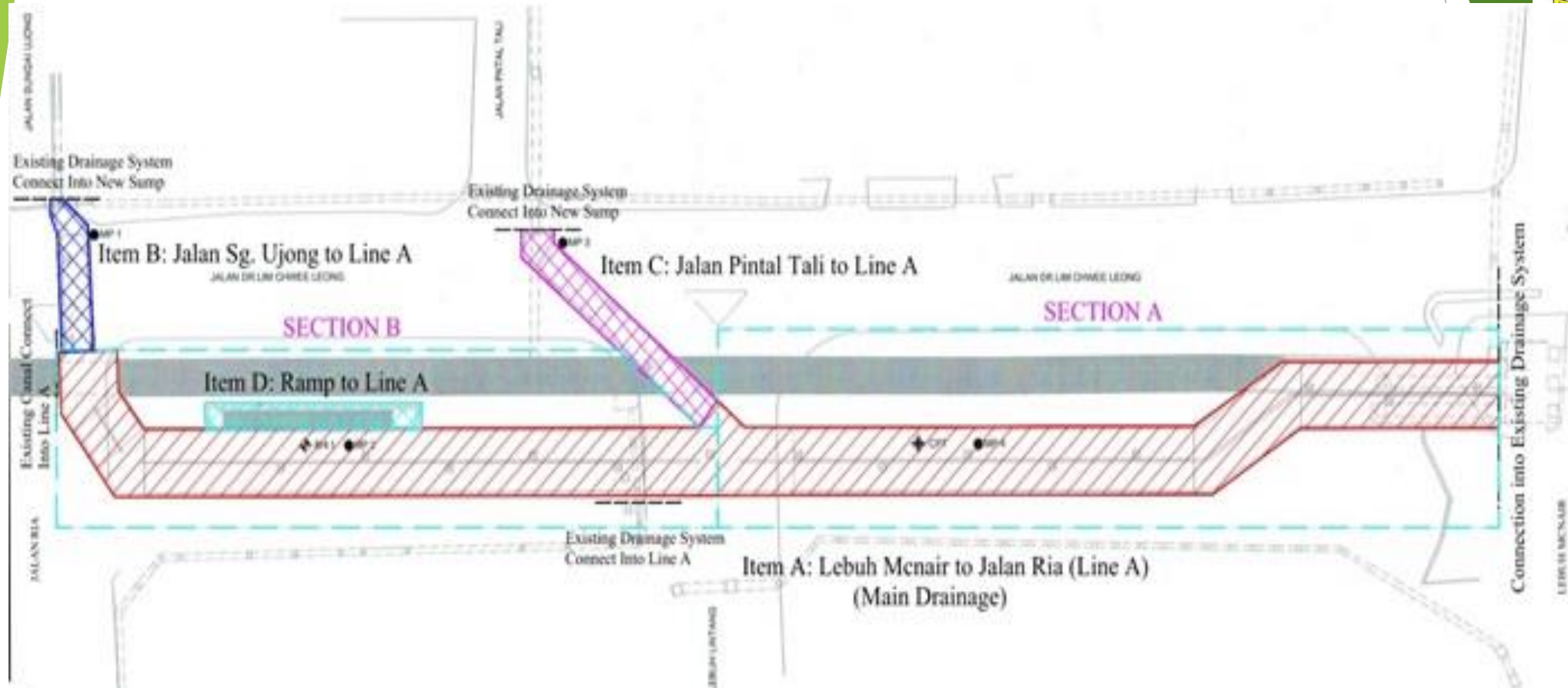
BY



SRI TANJONG BINA SDN. BHD.
(441270-A)

"YOUR UNDERGROUND SOLUTION"

PROJECT PLAN



OVERALL VIEW OF WORK AT LEBUH LINTANG



Several lanes at Lebu Lintang will be closed temporarily in 3 stages to give way to the construction of twin box culvert with the overall width of 7.2 meter. The work will start from 20.7.2018 and expected to complete by 2.11.2018.

PRESENTED BY



SRI TANJONG BINA SDN. BHD.
(441270-A)

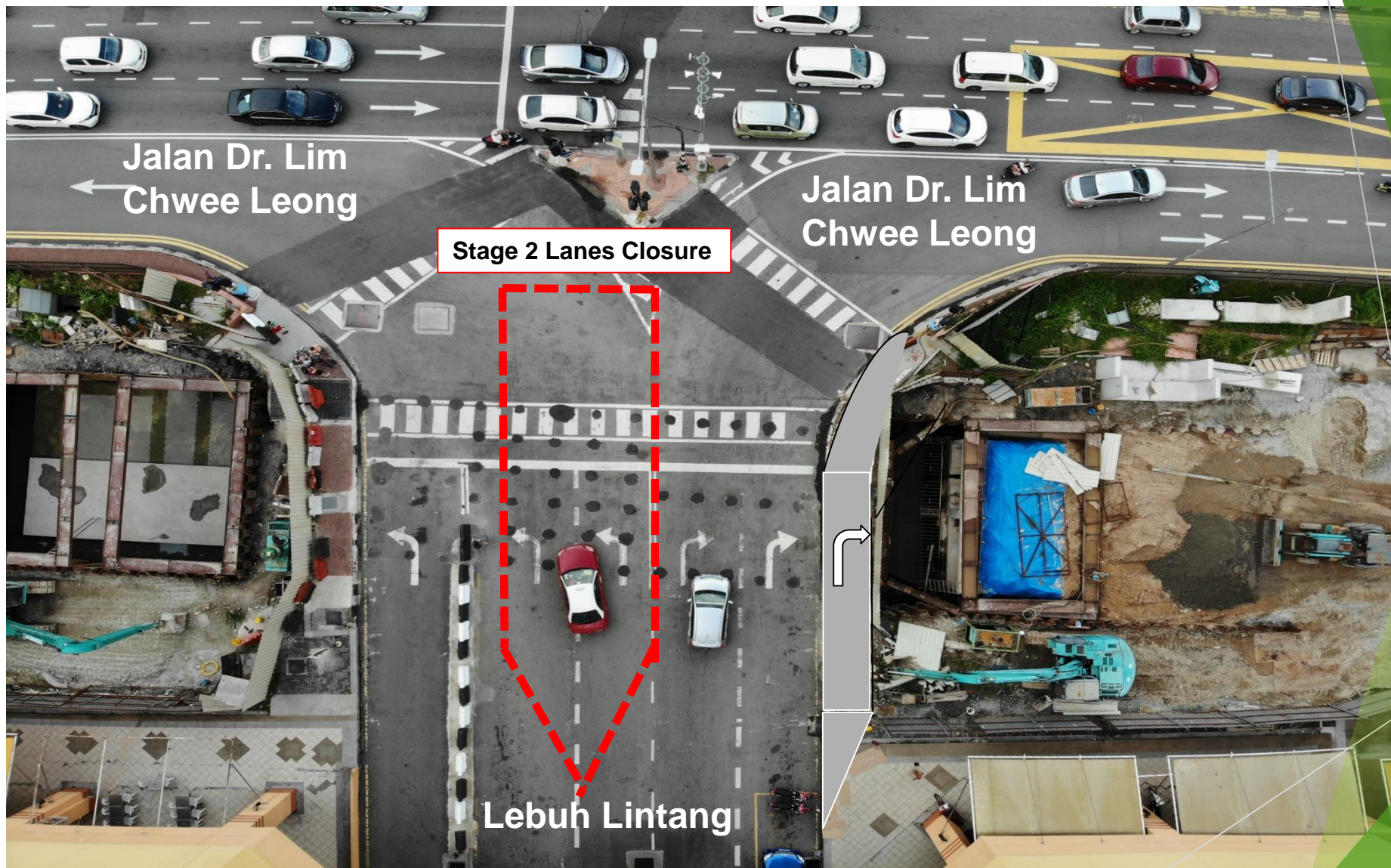
YOUR UNDERGROUND SOLUTION

STAGE 1 LANES CLOSURE



During Stage 1 Lane Closure, two lanes on the right will be close for estimated duration of 35 days starting from 20.7.2018 until 24.8.2018

TRAFFIC MANAGEMENT PLAN (STAGE 2)



During Stage 2 Lane Closure, two lanes in the middle will be close for estimated duration of 35 days starting from 25.8.2018 until 28.9.2018.

PRESENTED BY



SRI TANJONG BINA SDN. BHD.
(441270-A)

YOUR UNDERGROUND SOLUTION

TRAFFIC MANAGEMENT PLAN (STAGE 3)



During Stage 3 Lane Closure, two lanes on the left will be close for estimated duration of 35 days starting from 29.9.2018 until 2.11.2018.

PRESENTED BY



SRI TANJONG BINA SDN. BHD.
(441270-A)

YOUR UNDERGROUND SOLUTION